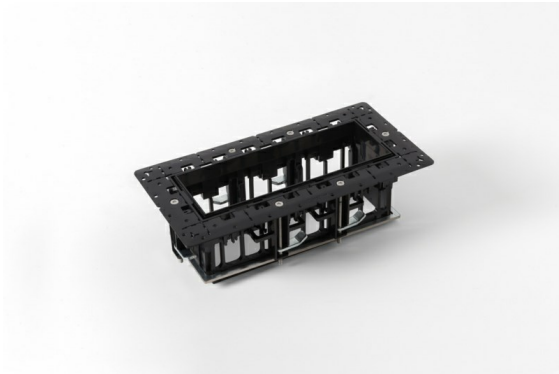
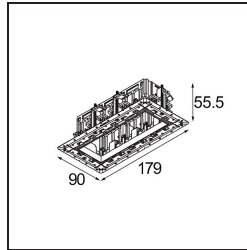


Date
Customer
Project
Type

## Qbini Frame Recessed Trimless 3x Black Matt



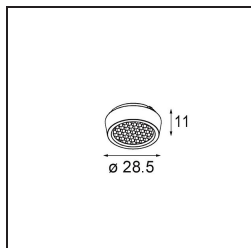
A portmanteau of cubic and mini, Qbini is a modular and miniature LED solution for extremely playful applications. Qbini Frame comes in square and rectangular frames that are waiting for you to choose from a host of design options and light effects. From tiny accent lights to general lighting modules.



### Specifications

Material	14180232
Lamp Included	No
Number of Light Sources	3
IP Rating	55
Glow wire rating (°C)	960
Indoor/Outdoor	Indoor
Application	Ceiling, Wall
Mounting	Recessed
Adjustability	Not Applicable
Primary Colour & Primary Finish	Black, Matt
Gross weight (g)	189.0
Remark	<ul style="list-style-type: none"> <li>• Qbini spotlight not included</li> <li>• This is not a complete product. Qbini Frame and Qbini spotlights required.</li> <li>• This is not a complete product. Qbini Frame and Qbini spotlights required.</li> </ul>

## Optical Accessories



**14191032** Honeycomb 26 Black Matt



**14192032** Snoot 26 Black Matt



**14193032** Crossblade 26 Black Matt

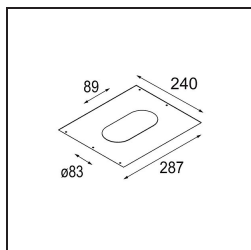
## Decorative Accessories



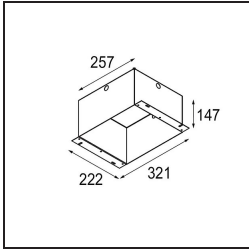
**14261009** Blind Cover Qbini White Structure

**14261032** Blind Cover Qbini Black Structure

## Installation Accessories



**12292230** Plaster Kit 240x287 - 41x89 1x



**10400230** Installation Housing 257x222x147

Choose a required accessory