

---

Date \_\_\_\_\_

---

Customer \_\_\_\_\_

---

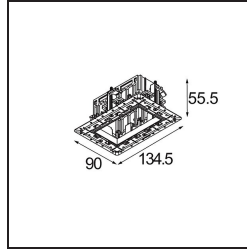
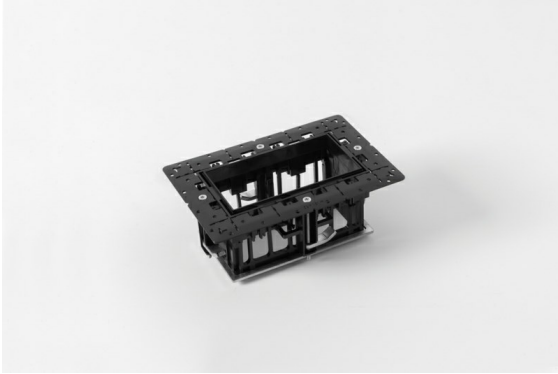
Project \_\_\_\_\_

---

Type \_\_\_\_\_

---

*Qbini Frame Recessed Trimless 2x Black Matt*

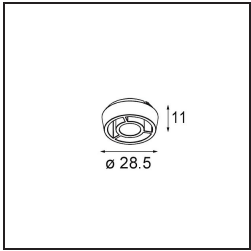


**Specifications**

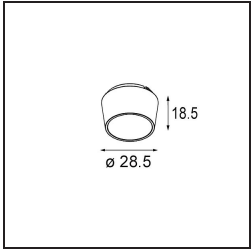
Material	14180132
Lamp Included	No
Number of Light Sources	2
IP Rating	55
Glow wire rating (°C)	960
Indoor/Outdoor	Indoor
Application	Ceiling, Wall
Mounting	Recessed
Adjustability	Not Applicable
Primary Colour & Primary Finish	Black, Matt
Gross weight (g)	169.0
Remark	<ul style="list-style-type: none"> <li>• Qbini spotlight not included</li> <li>• This is not a complete product. Qbini Frame and Qbini spotlights required.</li> <li>• This is not a complete product. Qbini Frame and Qbini spotlights required.</li> </ul>

A portmanteau of cubic and mini, Qbini is a modular and miniature LED solution for extremely playful applications. Qbini Frame comes in square and rectangular frames that are waiting for you to choose from a host of design options and light effects. From tiny accent lights to general lighting modules.

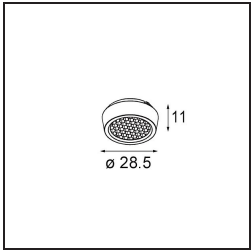
**Optical Accessories**



**14193032** Crossblade 26 Black Matt

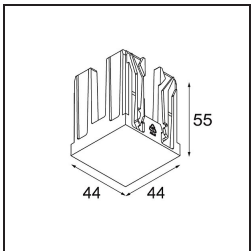


**14192032** Snoot 26 Black Matt



**14191032** Honeycomb 26 Black Matt

**Decorative Accessories**

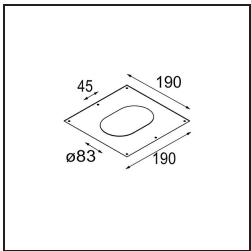


**14261009** Blind Cover Qbini White Structure

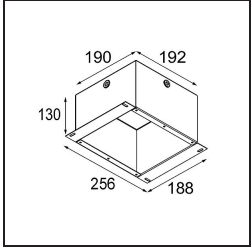
**14261032** Blind Cover Qbini Black Structure

**14261046** Blind Cover Qbini Gold Matt

**Installation Accessories**



**12292130** Plaster Kit 190x190 - 41x45 1x



**10889830** Installation Housing 192x190x130

Choose a required accessory