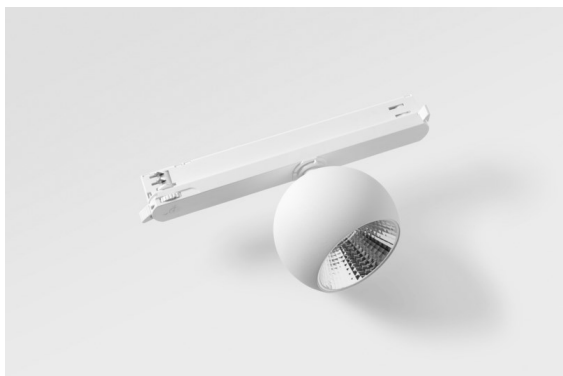
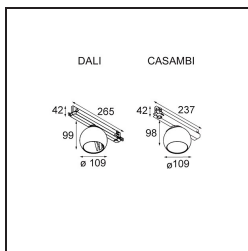


Date
Customer
Project
Type

Marbul Track 230V Adjustable 109 1x LED 1800-3000K WD Casambi DI White Structure



Marbul is a timeless, spherical accent luminaire. Its pure geometrical shape makes it easily fit in every interior. Why designers love it so? The attention to detail and the simplicity of the shape present a minimalistic, elegant and versatile design for those looking to experiment with organic lighting.



Specifications

Material	13500809
Light Source Type	LED
LED Type	BRIDGELUX WARMDIM 12W
LED technology	LED COB
CRI	Min. 95
Colour Temperature	1800-3000K (Warm Dim)
Lifetime	L80B10 @50,000 Hours
Lamp Included	Yes
Number of Light Sources	1
CIE flux code	100 100 100 100 94
Binning (SDCM)	3
Light Direction	Down
Input Voltage	230V
Luminaire power (W)	14.5
Electrical Class	II
IP Rating	20
Glow wire rating (°C)	960
Dimming Protocol	Casambi
Indoor/Outdoor	Indoor
Application	Ceiling, Wall
Adjustability	H 360° V 45°
Distance to Lighted Object (m)	0,1
Primary Colour & Primary Finish	White, Structure
Smart Lighting	Casambi
Gross weight (g)	1236.0
Drive current (mA)	350
Luminous flux per lamp (lm)	955
Efficacy (lm/W)	65
Glare rating	14

Remark	<ul style="list-style-type: none">• 4000K on request• This is not a complete product. Discover the required accessories below.• Magnetic reflector not included• 4000K on request• This is not a complete product. Magnetic reflector and track 230V system required.• This is not a complete product. Magnetic reflector and track 230V system required.
--------	--

TM30 & CRI diagram



Light distribution & beam diagram



Optical Accessories

- **10219330** Reflector 82 Medium WD Aluminium Anodised
- **10219630** Reflector 82 Flood WD Gold Anodised
- **10219430** Reflector 82 Flood WD Aluminium Anodised
- **10219830** Reflector 82 Flood WD Champagne Anodised
- Choose a required accessory