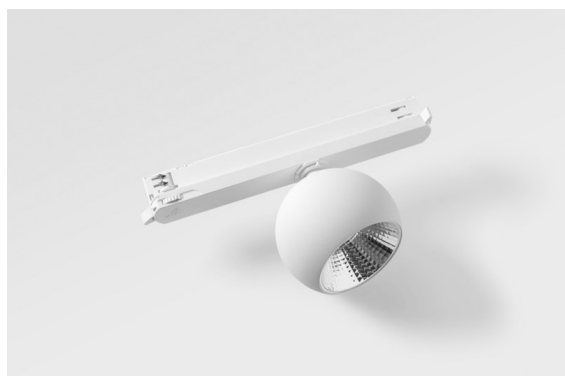
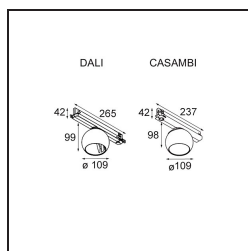


|          |
|----------|
| Date     |
| Customer |
| Project  |
| Type     |

*Marbul Track 230V Adjustable 109 1x LED 2700K DALI DI White Structure*



Marbul is a timeless, spherical accent luminaire. Its pure geometrical shape makes it easily fit in every interior. Why designers love it so? The attention to detail and the simplicity of the shape present a minimalistic, elegant and versatile design for those looking to experiment with organic lighting.



**Specifications**

|                                 |   |
|---------------------------------|---|
| Material                        | 13500009  |
| Light Source Type               | LED   |
| LED Type                        | CREE 1507   |
| LED technology                  | LED COB   |
| CRI                             | Min. 90   |
| Colour Temperature              | 2700K   |
| Lifetime                        | L80B20 @50,000 Hours  |
| Lamp Included                   | Yes   |
| Number of Light Sources         | 1   |
| CIE flux code                   | 100 100 100 100 88  |
| Binning (SDCM)                  | 2   |
| Light Direction                 | Down  |
| Input Voltage                   | 230V  |
| Luminaire power (W)             | 8.5   |
| Electrical Class                | II  |
| IP Rating                       | 20  |
| Glow wire rating (°C)           | 960   |
| Dimming Protocol                | DALI  |
| DALI Standard                   | DALI-2  |
| Indoor/Outdoor                  | Indoor  |
| Application                     | Ceiling, Wall   |
| Adjustability                   | H 360° V 45°  |
| Distance to Lighted Object (m)  | 0,1   |
| Primary Colour & Primary Finish | White, Structure  |
| Gross weight (g)                | 1273.0  |
| Luminous flux per lamp (lm)     | 634   |
| Efficacy (lm/W)                 | 74  |
| Glare rating                    | 14  |
| Remark                          | <ul style="list-style-type: none"> <li>• 4000K on request</li> <li>• Magnetic reflector not included</li> <li>• 4000K on request</li> <li>• This is not a complete product. Magnetic reflector and track 230V system required.</li> <li>• This is not a complete product. Magnetic reflector and track 230V system required.</li> </ul> |

**TM30 & CRI diagram**



**Light distribution & beam diagram**



### *Optical Accessories*

- **10216830** Reflector 82 Super Spot Aluminium Anodised
- **10216930** Reflector 82 Super Spot Champagne Anodised
- **10217030** Reflector 82 Super Spot Gold Anodised
- **10217130** Reflector 82 Medium Aluminium Anodised
- **10217230** Reflector 82 Medium Champagne Anodised
- **10217330** Reflector 82 Medium Gold Anodised
- **10217430** Reflector 82 Flood Aluminium Anodised
- **10217530** Reflector 82 Flood Champagne Anodised
- **10217630** Reflector 82 Flood Gold Anodised
  
- Choose a required accessory