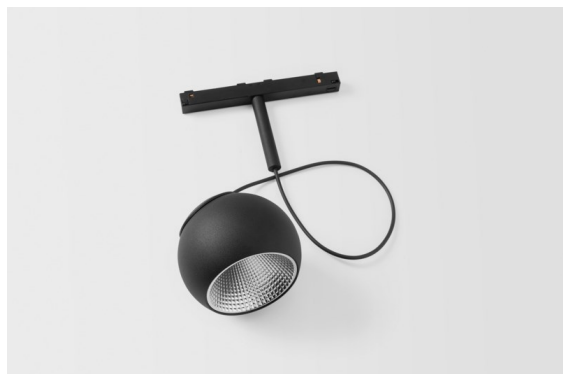


Marbul Track 48V Suspended Adjustable 109 1x LED 3000K DALI Black Structure



Marbul is a timeless, spherical accent luminaire. Its pure geometrical shape makes it easily fit in every interior. Why designers love it so? The attention to detail and the simplicity of the shape present a minimalistic, elegant and versatile design for those looking to experiment with organic lighting.



Specifications

Material	13481432
Light Source Type	LED
LED Type	CREE 1507
LED technology	LED COB
CRI	Min. 90
Colour Temperature	3000K
Lifetime	L80B20 @50,000 Hours
Lamp Included	Yes
Number of Light Sources	1
CIE flux code	100 100 100 100 88
Binning (SDCM)	2
Light Direction	Down
Optic	Reflector
Input Voltage	48Vdc
Luminaire power (W)	8.5
Electrical Class	III
IP Rating	20
Glow wire rating (°C)	960
Dimming Protocol	DALI
DALI Standard	DALI-2
Indoor/Outdoor	Indoor
Application	Ceiling
Mounting	Suspended
Adjustability	H 360° V 45°
Distance to Lighted Object (m)	0,1
Primary Colour & Primary Finish	Black, Structure
Gross weight (g)	1049.0
Luminous flux per lamp (lm)	718
Efficacy (lm/W)	84
Glare rating	15

Remark

- Magnetic reflector not included
 - Longer suspension cable on request (standard length is 2 meter)
 - This is not a complete product. Magnetic reflector and Pista track 48V system required.
 - This is not a complete product. Magnetic reflector and Pista track 48V system required.
 - For installations without dimmer, it is recommended to use 1-10 V luminaires.
-

TM30 & CRI diagram



Light distribution & beam diagram



Diagrams

Optical Accessories

- **10216830** Reflector 82 Super Spot Aluminium Anodised
- **10216930** Reflector 82 Super Spot Champagne Anodised
- **10217030** Reflector 82 Super Spot Gold Anodised
- **10217130** Reflector 82 Medium Aluminium Anodised
- **10217230** Reflector 82 Medium Champagne Anodised
- **10217330** Reflector 82 Medium Gold Anodised
- **10217430** Reflector 82 Flood Aluminium Anodised
- **10217530** Reflector 82 Flood Champagne Anodised
- **10217630** Reflector 82 Flood Gold Anodised

- Choose a required accessory