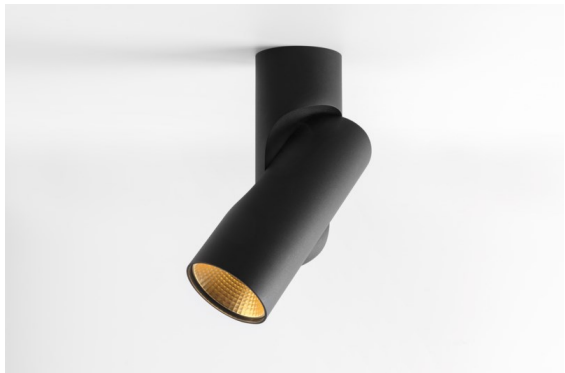
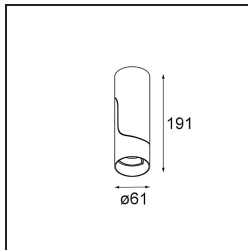


Date
Customer
Project
Type

*Semih Surface Adjustable 61 1x LED 2700K 1-10V DI Black Structure*



Semih is an award-winning downlighter with functional positive energy. Inspired by the yin-yang symbol, a sinuous S-shaped line divides Semih in two equal, complementary parts: the hard, solid part mounted to the ceiling and the soft, flexible part housing the light. Now available in two sizes.



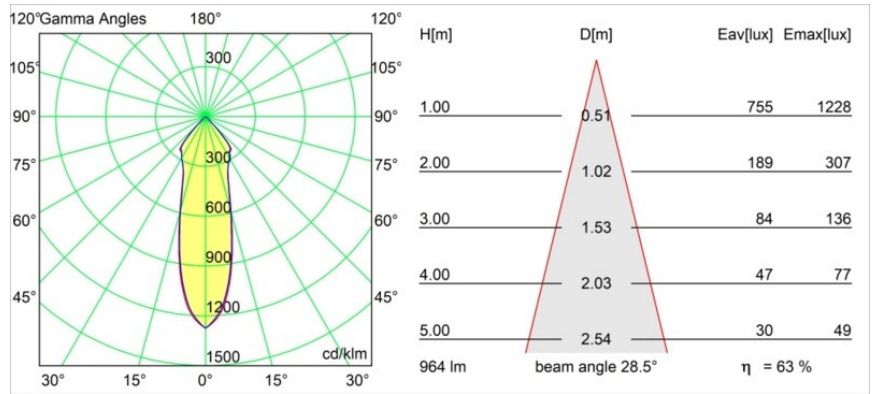
**Specifications**

Material	13440232
Light Source Type	LED
LED Type	BRIDGELUX V6 HD G7
LED technology	LED COB
CRI	Min. 90
Colour Temperature	2700K
Lifetime	L80B10 @50,000 Hours
Lamp Included	Yes
Number of Light Sources	1
CIE flux code	21 94 99 100 100
Binning (SDCM)	2
Light Direction	Down
Input Voltage	230V
Luminaire power (W)	11.0
Electrical Class	I
IP Rating	20
Glow wire rating (°C)	960
Dimming Protocol	1-10V
Indoor/Outdoor	Indoor
Application	Ceiling
Mounting	Surface
Adjustability	H 355° V -70/+70°
Distance to Lighted Object (m)	0,1
Primary Colour & Primary Finish	Black, Structure
Gross weight (g)	582.0
Luminous flux per lamp (lm)	704
Efficacy (lm/W)	64
Glare rating	21
Remark	<ul style="list-style-type: none"> <li>• 3500K and 4000K on request</li> <li>• Magnetic reflector or lens not included</li> <li>• 3500K and 4000K on request</li> </ul>

**TM30 & CRI diagram**



**Light distribution & beam diagram**



### *Optical Accessories*

- **10217003** Lens 57 Medium
- **10218030** Reflector 57 Spot Aluminium Anodised
- **10218130** Reflector 57 Medium Aluminium Anodised
- **10218430** Reflector 57 Flood Gold Anodised
- **10218230** Reflector 57 Flood Aluminium Anodised
- **10218630** Reflector 57 Flood Champagne Anodised
- Choose a required accessory