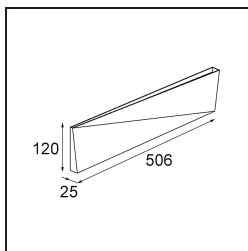
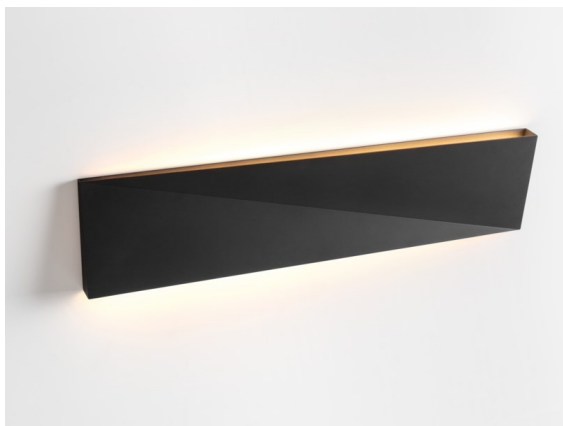


| |
|----------|
| Date |
| Customer |
| Project |
| Type |

Dent Wall Up/Down L 1x LED 3000K DE Black Structure



Specifications

| | |
|---------------------------------|----------------------------------|
| Material | 11612132 |
| Light Source Type | LED |
| LED Type | DENT - TCI LED 36x 3030 |
| LED technology | LED PCB |
| CRI | Min. 90 |
| Colour Temperature | 3000K |
| Lifetime | L80B20 @50,000 Hours |
| Lamp Included | Yes |
| Number of Light Sources | 1 |
| CIE flux code | 64 92 99 50 19 |
| Binning (SDCM) | 3 |
| Light Direction | Up/Down |
| Input Voltage | Constant Current Driver Required |
| Luminaire power (W) | 5.2 |
| Electrical Class | III |
| IP Rating | 20 |
| Glow wire rating (°C) | 960 |
| Indoor/Outdoor | Indoor |
| Application | Wall |
| Mounting | Surface |
| Adjustability | Not Applicable |
| Distance to Lighted Object (m) | 0,1 |
| Primary Colour & Primary Finish | Black, Structure |
| Gross weight (g) | 1615.0 |
| Drive current (mA) | 350 |
| Min. forward voltage (Vf) | 48,6 |
| Max. forward voltage (Vf) | 50,29 |
| Connected load (W) | 17,6 |
| Luminous flux per lamp (lm) | 516 |
| Efficacy (lm/W) | 29 |
| Glare rating | 22 |

Dent is a wall luminaire with a playful personality. It's also art. Its design is enigmatic, looking one way, and then another. A diagonal fold in the middle creates a fun, dual effect on its surface. Play with Dent's different sizes and create patterns of light that are puzzling and functional.

Light distribution & beam diagram

