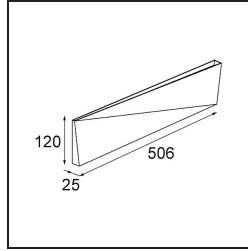
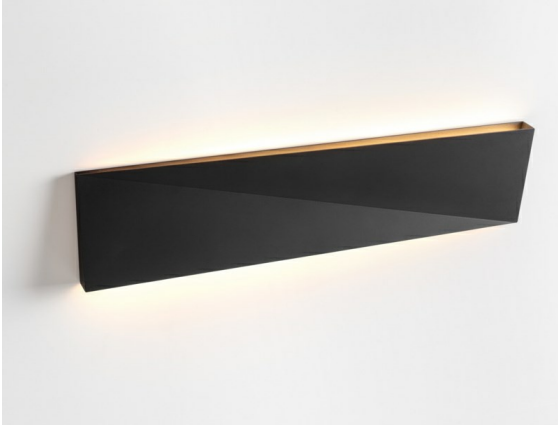


Date
Customer
Project
Type

*Dent Wall Up/Down L 1x LED 2700K DE Black Structure*



**Specifications**

Material	11612032
Light Source Type	LED
LED Type	DENT - TCI LED 36x 3030
LED technology	LED PCB
CRI	Min. 90
Colour Temperature	2700K
Lifetime	L80B20 @50,000 Hours
Lamp Included	Yes
Number of Light Sources	1
CIE flux code	64 92 99 50 19
Binning (SDCM)	3
Light Direction	Up/Down
Input Voltage	Constant Current Driver Required
Luminaire power (W)	36.0
Electrical Class	III
IP Rating	20
Glow wire rating (°C)	960
Indoor/Outdoor	Indoor
Application	Wall
Mounting	Surface
Adjustability	Not Applicable
Distance to Lighted Object (m)	0,1
Primary Colour & Primary Finish	Black, Structure
Gross weight (g)	1615.0
Drive current (mA)	350
Min. forward voltage (Vf)	48,6
Max. forward voltage (Vf)	50,29
Connected load (W)	17,6
Delivered lumens (lm)	473
Efficacy (lm/W)	26
Glare rating	22

Dent is a wall luminaire with a playful personality. It's also art. Its design is enigmatic, looking one way, and then another. A diagonal fold in the middle creates a fun, dual effect on its surface. Play with Dent's different sizes and create patterns of light that are puzzling and functional.

**Light distribution & beam diagram**

