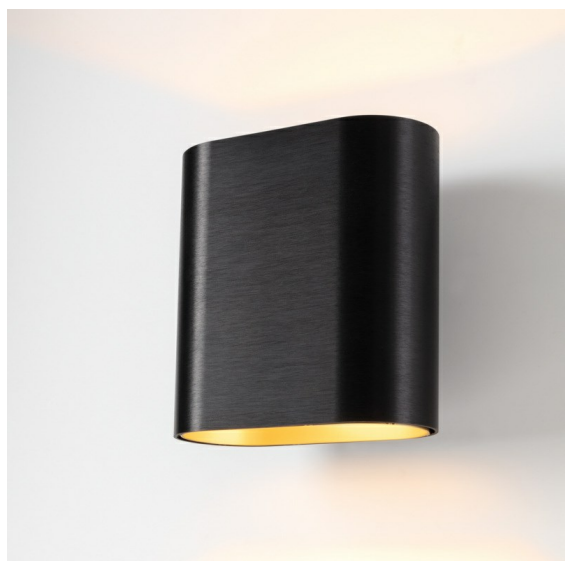
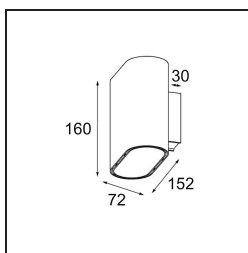


Date
Customer
Project
Type

Duell Wall Up/Down 2x LED 2700K 1-10V/Push-Dim DI Black Brushed Anodised - Champagne Anodised



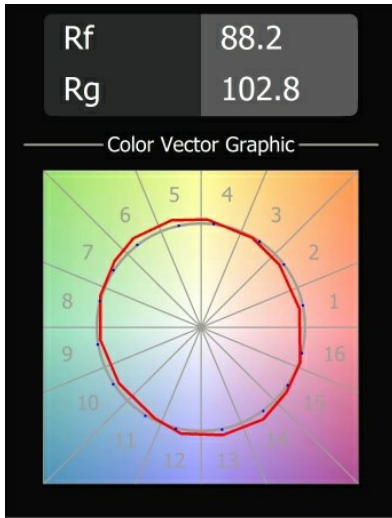
Duell's gentle curves are sure to give any space a softer touch. This two-colour, LED luminaire invites you to play with combinations. One for the outside, and one for the inside plate. For ceiling-mounted applications, recessed and surface-mounted variants are available. The recessed version has an attractive broad rim, while the surface version also offers a directional variant.



Specifications

Material	11074608
Light Source Type	LED
LED Type	BRIDGELUX V8G8
LED technology	LED COB
CRI	Min. 90
Colour Temperature	2700K
Lifetime	L90B10 @50,000 Hours
Lamp Included	Yes
Number of Light Sources	2
CIE flux code	68 93 99 50 59
Binning (SDCM)	2
Light Direction	Up/Down
Input Voltage	230V
Luminaire power (W)	12.0
Electrical Class	I
IP Rating	20
Glow wire rating (°C)	960
Dimming Protocol	1-10V, Push-Dim
Indoor/Outdoor	Indoor
Application	Wall
Mounting	Surface
Adjustability	Not Applicable
Distance to Lighted Object (m)	0,1
Primary Colour & Primary Finish	Black, Brushed Anodised
Secondary Colour & Secondary Finish	Champagne, Anodised
Gross weight (g)	1220.0
Delivered lumens (lm)	763
Efficacy (lm/W)	64
Glare rating	17

TM30 & CRI diagram



Light distribution & beam diagram

