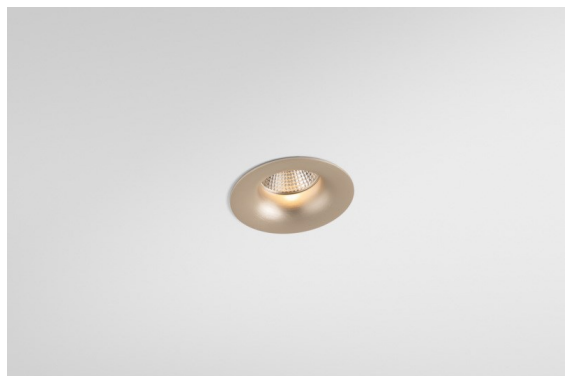


|          |
|----------|
| Date     |
| Customer |
| Project  |
| Type     |

*Smart Cake Recessed 82 1x LED 2700K Spot DE Silver Bronze Brushed*



The 3 original designs, Smart Kup, Lotis and Cake still manage to steal the hearts of interior designers. And this goes for the entire Smart family. Smart's accessibility and extreme versatility are arguably fit for any expression. Mix and match accent lighting, up and downlight, fixed or adjustable, a mosaic of shapes, sizes, colours and mounting options, and create a playful installation.

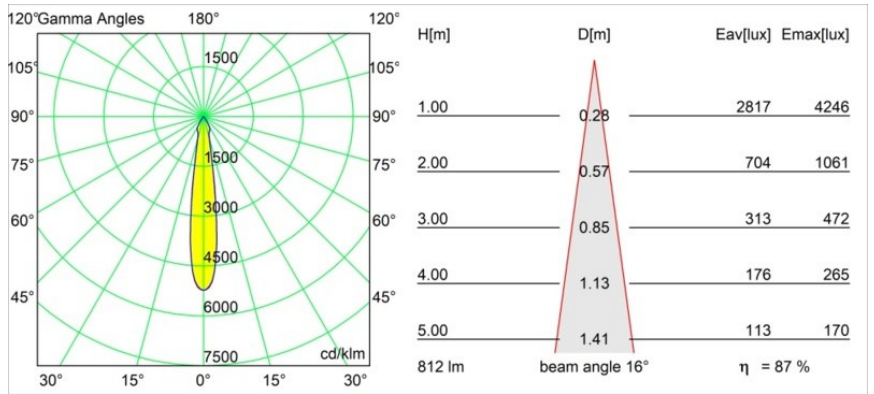
**Specifications**

|                                 |                                  |
|---------------------------------|----------------------------------|
| Material                        | 12411616                         |
| Light Source Type               | LED                              |
| LED Type                        | BRIDGELUX V8G8                   |
| LED technology                  | LED COB                          |
| CRI                             | Min. 90                          |
| Colour Temperature              | 2700K                            |
| Lifetime                        | L80B10 @50,000 Hours             |
| Lamp Included                   | Yes                              |
| Number of Light Sources         | 1                                |
| CIE flux code                   | 94 98 100 100 88                 |
| Binning (SDCM)                  | 2                                |
| Light Direction                 | Down                             |
| Optic                           | Reflector                        |
| Measured beam angle (°)         | 16.0                             |
| Input Voltage                   | Constant Current Driver Required |
| Electrical Class                | III                              |
| IP Rating                       | 20                               |
| Glow wire rating (°C)           | 960                              |
| Indoor/Outdoor                  | Indoor                           |
| Application                     | Ceiling, Wall                    |
| Mounting                        | Recessed                         |
| Cut-out size (mm)               | ø70                              |
| Mounting depth (mm)             | 100.0                            |
| Distance to Lighted Object (m)  | 0,1                              |
| Primary Colour & Primary Finish | Silver Bronze, Brushed           |
| Gross weight (g)                | 260.0                            |
| Drive current (mA)              | 350      500      700            |
| Min. forward voltage (Vf)       | 13,2      13,7      14,2         |
| Max. forward voltage (Vf)       | 15,0      15,4      16,0         |
| Connected load (W)              | 5,0      7,2      10,6           |
| Luminous flux per lamp (lm)     | 528      714      943            |
| Efficacy (lm/W)                 | 106      99      89              |
| Glare rating                    | 19      20      21               |
| Remark                          | • 3500K on request               |

**TM30 & CRI diagram**



**Light distribution & beam diagram**

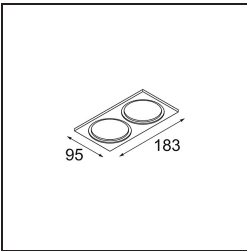


Diagrams

**Decorative Accessories**

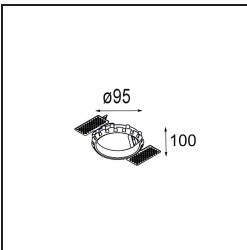


- 12500032** Mask Smart 82 1x Black Structure
- 12500009** Mask Smart 82 1x White Structure
- 12500046** Mask Smart 82 1x Gold Matt
- 12500015** Mask Smart 82 1x Champagne Brushed
- 12500014** Mask Smart 82 1x Bronze Brushed
- 12500043** Mask Smart 82 1x Black Brushed
- 12500016** Mask Smart 82 1x Silver Bronze Brushed

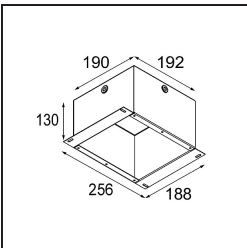


- 12500109** Mask Smart 82 2x White Structure
- 12500132** Mask Smart 82 2x Black Structure
- 12500146** Mask Smart 82 2x Gold Matt
- 12500114** Mask Smart 82 2x Bronze Brushed
- 12500116** Mask Smart 82 2x Silver Bronze Brushed
- 12500115** Mask Smart 82 2x Champagne Brushed
- 12500143** Mask Smart 82 2x Black Brushed

**Installation Accessories**



- 12500230** Ring Recessed 82 1x



- 10889830** Installation Housing 192x190x130



**12290130** Plaster Kit 190X190 - 70 1x



**12291030** Plaster Kit 210x190 - 70 2x

Choose a required accessory